

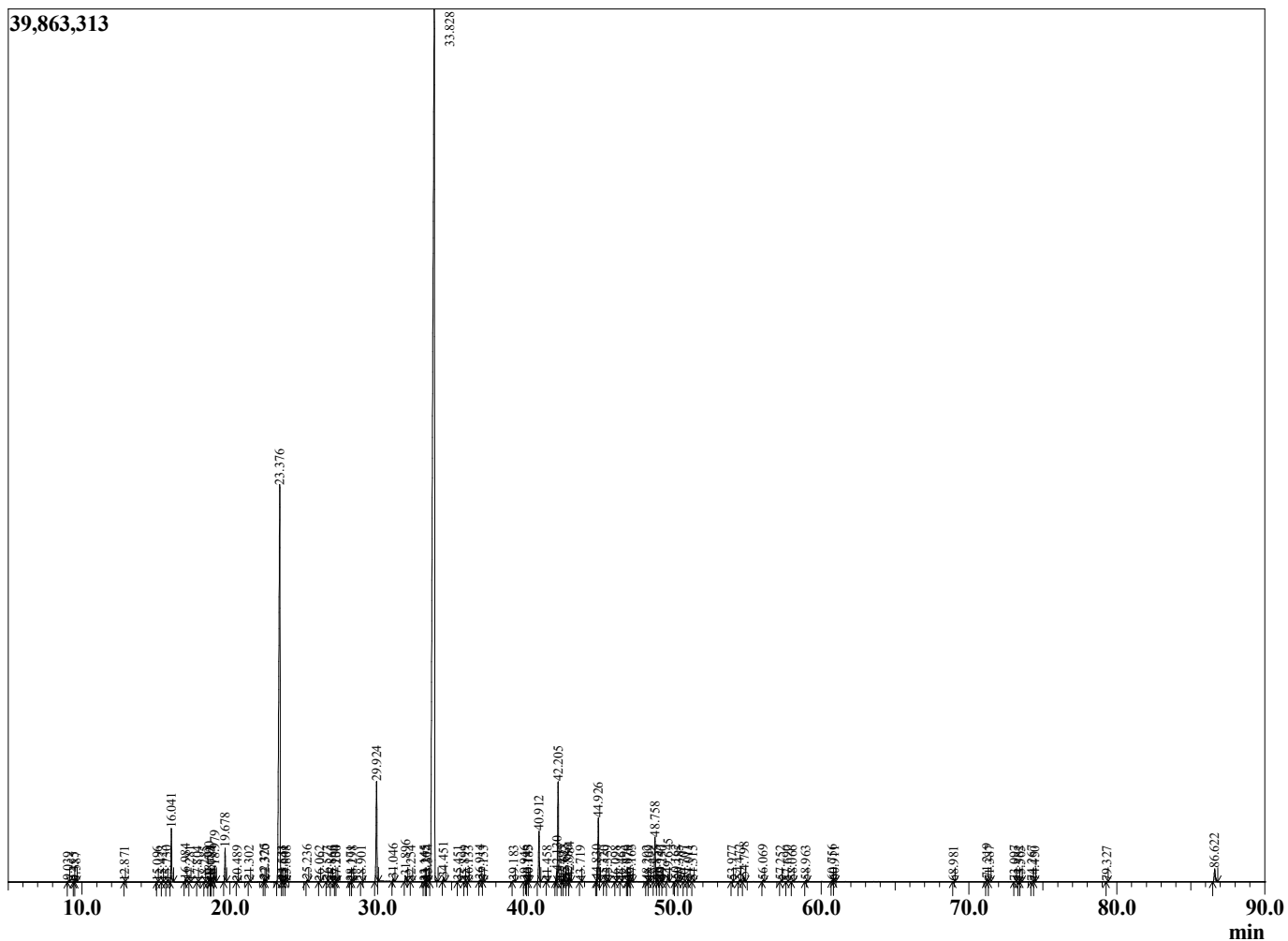
Sample Information

Sample Type : Essential Oil  
 Sample Name : Salvia sclarea  
 Injection Volume : 0.10

Clary Sage France  
 Lot# FRH8-HE  
 Country: France



Chromatogram Salvia sclarea



R.Time	Name	Area%
9.039	Hex-(3Z)-enol	0.02
9.455	Hex-(2E)-enol	0.01
9.587	Hexanol	0.01
12.871	alpha-Pinene	0.01
15.096	beta-Pinene	0.01
15.423	1-Octen-3-ol	0.02
15.730	Unidentified	0.01
16.041	Myrcene	1.48
16.984	Pseudolimonene + cis-Dehydrolinalool oxide	0.08
17.281	delta-3-Carene	0.01
17.804	alpha-Terpinene	0.01
18.285	para-Cymene	0.01
18.590	Limonene	0.12
18.693	beta-Phellandrene	0.00
18.784	1,8-Cineole	0.01
18.979	(Z)-beta-Ocimene	0.46
19.678	(E)-beta-Ocimene	0.95
20.489	gamma-Terpinene	0.01
21.302	cis-Linalool oxide (furanoid)	0.02
22.325	Terpinolene	0.08
22.370	trans-Linalool oxide (furanoid)	0.03
23.376	Linalool	18.38
23.533	Hotrienol	0.04
23.641	Nonanal	0.03
23.808	beta-Thujone	0.01
25.236	allo-Ocimene	0.05
26.062	neoallo-Ocimene	0.01
26.573	Camphor	0.02
26.866	Nerol oxide	0.02
27.134	Unidentified	0.01
27.200	Unidentified	0.01
28.171	delta-Terpineol	0.01
28.298	Borneol	0.01
28.901	Terpinen-4-ol	0.01
29.924	alpha-Terpineol	3.39
31.046	Linalyl formate	0.08
31.896	Nerol	0.19
32.254	Unidentified	0.01
33.145	Unidentified	0.01
33.265	Unidentified	0.01
33.374	Unidentified	0.04
33.828	Linalyl acetate	62.46
34.451	Unidentified	0.13
35.451	Neryl formate	0.02
35.899	Isopulegyl acetate isomer	0.01
36.133	(E)-Anethole	0.01
36.914	Geranyl formate	0.04
37.153	Tridecane	0.01
39.183	Unidentified	0.04
39.946	Unidentified	0.02
40.143	alpha-Terpinyl acetate	0.04
40.185	alpha-Cubebene	0.02
40.912	Neryl acetate	1.72
41.458	Unidentified	0.01
42.130	alpha-Copaene	0.27
42.205	Geranyl acetate	3.49

R.Time	Name	Area%
42.495	Elemene analog	0.01
42.623	beta-Bourbonene	0.11
42.886	beta-Cubebene	0.07
42.984	beta-Elemene	0.14
43.719	Unidentified	0.01
44.830	beta-Ylangene	0.02
44.926	trans-beta-Caryophyllene	2.28
45.320	Unidentified	0.01
45.559	beta-Copaene	0.03
46.098	Aromadendrene	0.01
46.463	Isogermacrene D	0.01
46.870	Unidentified	0.00
46.978	(E)-beta-Farnesene	0.02
47.163	alpha-Humulene	0.05
48.202	10-beta-H-Cadina-1(6),4-diene	0.02
48.369	trans-Cadina-1(6),4-diene	0.02
48.758	Germacrene D	1.54
48.855	Unidentified	0.02
49.147	Unidentified	0.06
49.250	Unidentified	0.01
49.645	Bicyclogermacrene	0.27
50.162	(E,E)-alpha-Farnesene	0.05
50.385	beta-Bisabolene	0.02
50.707	gamma-Cadinene	0.00
51.011	delta-Cadinene	0.07
51.315	Dihydroagarofuran analog	0.02
53.977	Unidentified	0.02
54.472	Spathulenol	0.06
54.798	Caryophyllene oxide	0.15
56.069	Unidentified	0.04
57.252	Unidentified	0.02
57.690	Unidentified	0.01
58.066	Unidentified	0.03
58.963	alpha-Eudesmol	0.03
60.756	Unidentified isomer I	0.03
60.911	Unidentified isomer II	0.01
68.981	Phytone	0.01
71.219	Sclareoloxide	0.10
71.387	Unidentified	0.01
73.097	Unidentified	0.02
73.382	Unidentified	0.02
73.505	Unidentified	0.01
74.267	Myrcene dimer I	0.02
74.450	Unidentified	0.01
79.327	Manool	0.01
86.622	Sclareol	0.55
		100.00